

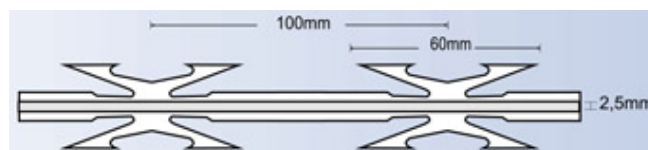
CONCERTINA ® H Type:

The Most Aggressive Standard Model.

Model:  
**H Type**

General Characteristics:

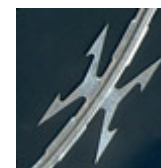
Concertina ® with long blades of 8 spikes, creating a hook effect. Reinforcement of core wire.



Recommended locations for installation:

In locations with high security requirements, for military areas, prisons, nuclear plants etc,...and general use.

THICKNESS	WIRE DIAMETER	BLADE LENGHT	BLADE WIDTH	DISTANCE BETWEEN BLADES
0,6mm	2,5mm	60mm	30mm	100mm



Formats:

For all types (qualities):

- Galvanized Steel Z275 (G90)
- Stainless Steel AISI 430
- Stainless Steel AISI 304

All diameters:

430	450	500	630	640	700	730	800	955	980	1250
-----	-----	-----	-----	-----	-----	-----	-----	-----	-----	------

Measures in mm.

Cno. De Juan Chaves S/N - C.P.: 29580 - CARTAMA E.F.C.- MÁLAGA – ESPAÑA – Tif: 952 42 70 70 – Fax: 952 42 70 85  
E-Mail: [info@europeansf.com](mailto:info@europeansf.com) – WEB: [www.europeansf.com](http://www.europeansf.com) – [www.concertina.es](http://www.concertina.es)